



Model DCC

Links the WOODSTOVE and the INSULATED CHIMNEY SYSTEM

TABLE OF CONTENTS

Introduction/Construction Features..... 3

Pipe Section 4

Adjustable Length..... 4

Universal Finishing Band..... 5

Two Piece Telescoping Section 5

Double Wall Connector Kit..... 5

90° Elbow..... 6

45° Elbow..... 6

30° Elbow..... 6

Tee 6

Stove Adapter 7

Increaser..... 7

Masonry Adapter..... 7

Oval-To-Round Adapter 7

Vertical Support Installation For Model DCC..... 8

Wall Support Installation for Model DCC 8

DCC Offset Chart 8

Double Wall Black Stove Pipe

Chimney Connector System

INTRODUCTION

MODEL DCC DOUBLE WALL STOVE PIPE

Model DCC is a premium quality system designed to provide better insulating value for superior wood stove performance. Double Wall Stove Pipe allows for reduced clearances to combustible materials and longer life than common single wall connector pipe.

The Model DCC is tested to UL103 and ULC-S641 with a 6" clearance on all diameters, and all configurations.

CONSTRUCTION FEATURES

MODEL DCC DOUBLE WALL STOVE PIPE

- Stainless Steel inner liner
- Air-insulated, double wall design
- Matte black finish – Forrest Stove Bright 1A54H206, touch-up paint AVD-PTU
- Easy to install and inspect screw joint assembly
- Drip-free design to prevent creosote leakage
- Components individually wrapped



1A54H206
Black Touch-up Paint
AVD-PTU



Model DCC Double Wall Stove Pipe

PIPE SECTION



DCC-6
DCC-12
DCC-18
DCC-24
DCC-36
DCC-48

- 6", 12", 18", 24", 36", and 48" lengths
- Stainless Steel inner liners
- Easy to install and disassemble screw-joint assembly
- For installed length - subtract 1 1/4"

Part No.	Size	ID	OD
6DCC-6, 12, 18, 24, 36, 48-BK	6"	6"	7"
8DCC-6, 12, 18, 24, 36, 48-BK	8"	8"	9"

ADJUSTABLE LENGTH



DCC-18A

- Adjustable length
- 18" section
- Slips over pipe section for adjustments from 3" to 15"

DCC-12A

- Adjustable length
- 12" section
- Slips over pipe section for adjustments from 3" to 9"

DCC-6A

- Adjustable length
- 6" section
- Slips over pipe section for adjustments from 2 1/2" to 5"

Part No.	Size	ID	OD
6DCC-18A-BK	6"	6"	7"
8DCC-18A-BK	8"	8"	9"
6DCC-12A-BK	6"	6"	7"
8DCC-12A-BK	8"	8"	9"
6DCC-6A-BK	6"	6"	7"
8DCC-6A-BK	8"	8"	9"

DCC-FB

- Used to conceal the connecting joint at the chimney adapter

Part No.	Size	Pack
DCC-FB-BK	All	1

UNIVERSAL FINISHING BAND



DCC-TS5

- Two-piece telescoping section
- 5-foot length
- Telescopes between stove and support
- Adjustments from 3 1/2' to 5 1/2'

Part No.	Size	ID	OD
6DCC-TS5-BK	6"	6"	7"
8DCC-TS5-BK	8"	8"	9"

TWO PIECE TELESCOPING SECTION



DCC-K

The kit includes two 24" pipe sections, one 18" adjustable length and one stove adapter. Kits are available in 6" and 8" sizes to accommodate vertical installations up to 66".

Part No.
6DCC-K-BK
8DCC-K-BK

DOUBLE WALL CONNECTOR KIT



Model DCC Double Wall Stove Pipe

90° ELBOW



DCC-90

Fixed 90° elbow is used to offset connector pipe toward the insulated chimney system.

Part No.	Size	A	B
6DCC-90-BK	6"	9 1/4"	10"
8DCC-90-BK	8"	11 1/4"	12"

45° ELBOW



DCC-45

Fixed 45° elbow is used to offset connector pipe toward the insulated chimney system.

See page 8 for Offset Chart.

Part No.	Size	A	B
6DCC-45-BK	6"	4 1/2"	5"
8DCC-45-BK	8"	4 3/4"	6"

30° ELBOW

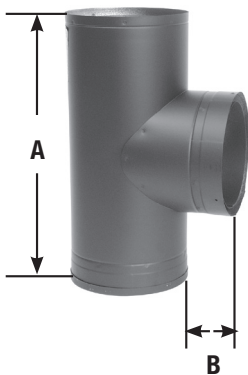


DCC-30

Fixed 30° Elbow is used to offset connector pipe toward the insulated chimney system.

Part No.	Size	A	B
6DCC-30-BK	6"	3 11/16"	4 1/16"
8DCC-30-BK	8"	3 11/16"	4 1/16"

TEE



DCC-T

- Tee is used where stove pipe connection is made at the rear of the appliance.
- Tee Cap is included.

Part No.	Size	A	B
6DCC-T-BK	6"	16"	3"
8DCC-T-BK	8"	17"	3"

DCC-SA

6" high adapter fits over tall stove collars.

Part No.	Size
6DCC-SA-BK	6"
8DCC-SA-BK	8"

6XDCC-7

6XDCC-8

The 6XDCC-8 may be used at either the top or bottom of DCC stove pipe to increase a 6" DCC to an 8" DCC. The 6XDCC-7 to be used at the top of DCC stove pipe to increase the 6" DCC to a 7" chimney system.

Part No.	Size
6XDCC-8-BK	6" to 8"
6XDCC-7-BK	6" to 7"

DCC-MA

- For installations through a masonry wall
- Used to connect Double Wall Stove Pipe to an existing masonry chimney or a relined masonry chimney with stainless steel liner

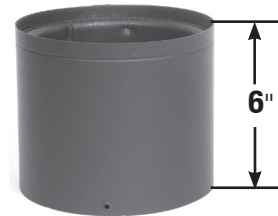
Part No.	Size	A	B	C	D	Pack
6DCC-MA	6"	6"	7"	14"	13 5/8"	1
8DCC-MA	8"	8"	9"	14"	13 5/8"	1

DCC-ORA

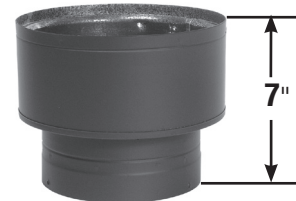
- Used to convert 8" Oval Flue outlets to 8" Round DCC Stove Pipe
- Secure with screws

Part No.	Size	A	B	C	Pack
8DCC-ORA-BK	8"	12 1/2"	9 1/4"	10"	1

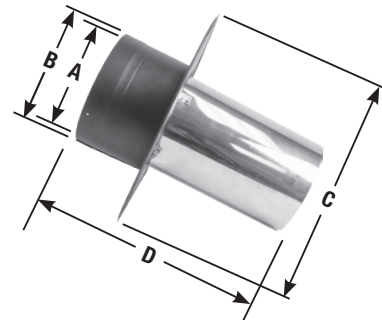
STOVE ADAPTER



INCREASER



MASONRY ADAPTER



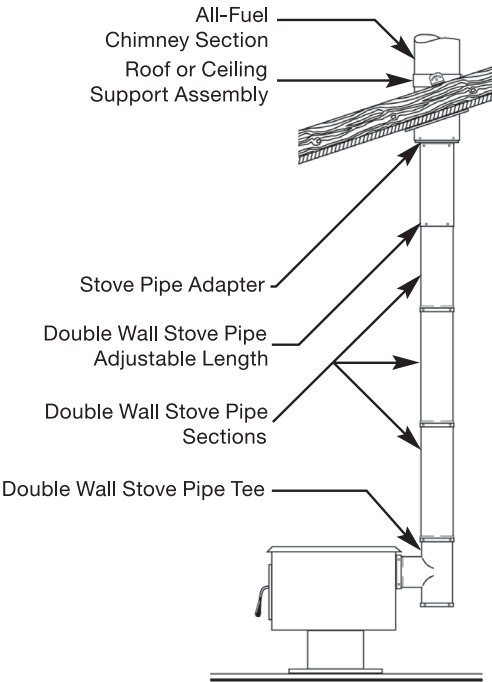
OVAL-TO-ROUND ADAPTER



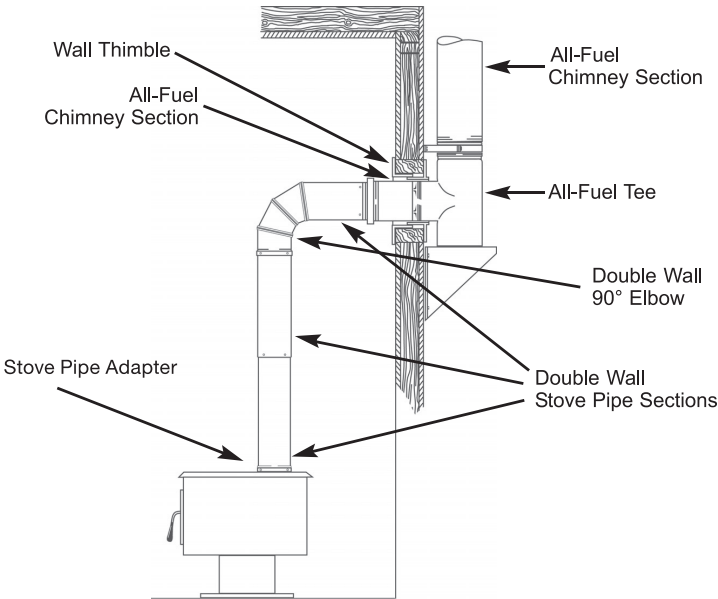
Model DCC Double Wall Stove Pipe

Typical Installations

VERTICAL SUPPORT INSTALLATION FOR MODEL DCC

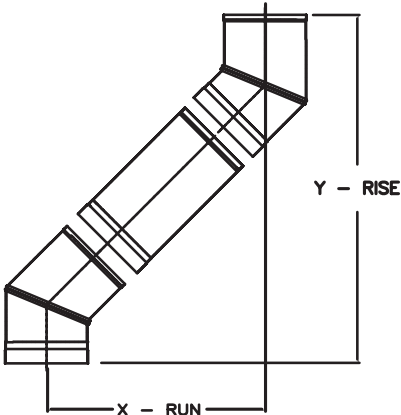


VERTICAL SUPPORT INSTALLATION FOR MODEL DCC



DCC OFFSET CHART

6" Diameter DCC with (2) 45° Elbows			8" Diameter DCC with (2) 45° Elbows		
Pipe Length	X - Run	Y - Rise	Pipe Length	X - Run	Y - Rise
0"	5 1/2"	13 1/4"	0"	6 7/8"	16 5/8"
12"	13 1/16"	20 13/16"	12"	14 1/2"	24 1/4"
18"	17 5/16"	25 1/16"	18"	18 3/4"	28 1/2"
24"	21 1/2"	29 5/16"	24"	23"	32 3/4"
36"	30"	37 3/4"	36"	31 1/2"	41 3/16"
48"	38 1/2"	46 1/4"	48"	39 15/16"	49 11/16"



This image shows a full-page view of a notebook or worksheet. At the top center, there is a red rectangular header containing the word "Notes" in white, bold, sans-serif font. Below the header, the page is filled with horizontal blue lines, providing space for writing. The lines are evenly spaced and extend across the width of the page.

Notes

Notes

Model DCC

For training, detailed product information, downloadable catalogs and installation instructions visit our website:

selkirkcorp.com



United States

5030 Corporate Exchange Blvd.
Grand Rapids, MI 49512

phone: 1.800.992.VENT (8368)
email: info@selkirkcorp.com

selkirkcorp.ca



Canada

375 Green Road
Stoney Creek, ON L8E 4A5

phone: 1.888.SELKIRK (735.5475)
email: cscanada@selkirkcorp.com

Complete Linecard



residential
chimney



roof curbs &
equipment
rails



access
doors



rooftop
products*



residential
vent



filters*



duct
components



flexible
air duct*



grilles,
registers,
diffusers



commercial
industrial vent