

# NAPOLEON<sup>®</sup>

PELLET BURNING

PELLET STOVE AND INSERT



# NPS45 - Pellet Stove

## Advanced Pellet Technology

Napoleon's pellet stove is a sensible solution for heating your home. The freestanding stove provides Zone Heating performance and a reliable heating source. It features Napoleon's four stage FAILSAFE™ system, Quiet Mode setting, convenient auto ignitor, variable speed auger, variable speed blower, airwash system, stylish black trivet and dual painted black accent rods. Napoleon's NPS45 gives you uncompromising pellet performance year after year with the comfort of knowing you have selected a product made with true craftsmanship and advanced technological innovations.

NPS45

8,500 – 42,500 BTU's

30 1/2" h x 22 3/8" w x 26 3/8" d

Handy cleaning/filling rake

For more detailed specifications on this unit, see page 7

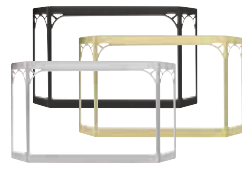
### Features & Accessories



Hopper Extension  
Increases pellet capacity to 80lbs



Decorative Ceramic  
PHAZER® Log Set



Doors  
Painted Black, 24 Karat Gold Plated  
and Satin Chrome Plated Finishes



Trivets  
Painted Black (standard),  
24 Karat Gold Plated and  
Satin Chrome Plated Finishes



F60 Remote Control  
Adjusts heat and on/off



Ash Pan Door  
& Extra Large Ash Pan  
(standard with unit)



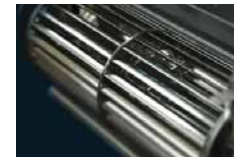
Heat Exchange Tubes  
(standard with unit)



Firebox Diffuser Fins  
(standard with unit)



Cast Iron Burn Pot  
(standard with unit)



120 CFM Convection Blower  
(standard with unit)





NPS45 shown with satin chrome plated trivet and door, hopper extension and decorative sandstone brick panels



Decorative Sandstone  
Brick Panels



MIRRO-FLAME  
Porcelain Reflective  
Radiant Panels





# NPI45 - Pellet Insert

## Exceptional Heat Performance

With Napoleon's advanced pellet technology and efficient heat exchanger, the Napoleon® pellet insert will have no problem living up to your "performance" expectations. Napoleon's pellet insert comes complete with a 120 CFM convection blower system, convenient auto ignitor, airwash system, stylish black trivet and dual painted black accent rods. It is convenient to use, easy to maintain and easy to fill without having to "refuel" for up to 45 hours!

NPI45

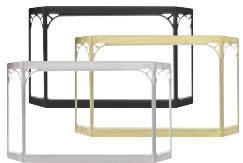
8,500 – 42,500 BTU's

20 3/8"h x 20 3/8"w x 16 1/2"d

Handy cleaning/filling rake

For more detailed specifications on this unit, see page 7

### Features & Accessories



Doors  
Painted Black, 24 Karat Gold Plated  
and Satin Chrome Plated Finishes



Trivets  
Painted Black (standard),  
24 Karat Gold Plated and  
Satin Chrome Plated Finishes



Arched Cast Iron  
& Cast Iron Surrounds  
Painted Black and Porcelain  
Enamel Majolica Brown Finishes



Decorative Ceramic  
PHAZER® Log Set



8" Black Flashing with Trim



F60 Remote Control  
Adjusts heat and on/off



Heat Exchange Tubes  
(standard with unit)



Firebox Diffuser Fins  
(standard with unit)



Cast Iron Burn Pot  
(standard with unit)



120 CFM Convection Blower  
(standard with unit)





NPI45 shown with standard black trivet, 8" flashing and decorative sandstone brick panels



Decorative Sandstone  
Brick Panels



MIRRO-FLAME  
Porcelain Reflective  
Radiant Panels



# Outstanding Features

Napoleon's Smart Pellet System with Optional Wireless Thermostatic or Wall Mount Remote Control

## 7 Pellet Stove & Insert Control Panel

### Lights

- Indicates set feed rates.
- When making fan adjustment, light will indicate fan speed temporarily and return to heat setting.

### Heat Adjustment

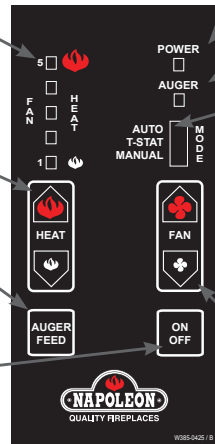
Increases or decreases the heat level/feed rate.

### Auger Feed

"Quick Feed" feature is ideal for initial start-up or when the hopper has run out of fuel to continually deliver pellets to the burn pot.

### On/off

Turns the heater on or off. Turns unit back on at previously preset mode.



### Power Light

Solid: Normal operating mode.  
Flashing: Start-up or shut down cycle.

### Auger Light

When on, the auger is turning.

### Operating Mode

Sets the heater's operating mode.

**Auto:** Ideal for Spring and Fall, shuts completely down between extended on/off cycles and re-lights electronically when heat is called for.

**T-Stat:** Typical winter setting - maintains small continuous fire (like a pilot light) during frequent on/off cycles, eliminating ignitor usage and conserving electricity.

**Manual:** Select blower and feed rate for continuous operation.

### Fan (blower) Adjustment

Increases or decreases the speed of the convection fan and provides heat to the room.

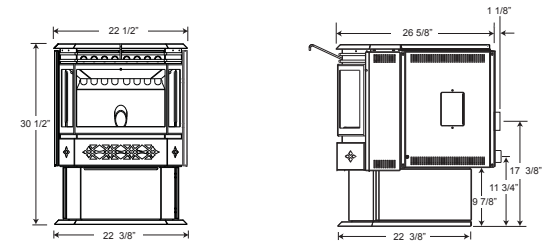


## Smart Pellet System

- Clean Glass Airwash**  
Advanced airwash system uses outside air to put a barrier between the glass and burn pot, creating a clean, clear viewing area.
- Low Maintenance**  
Fly ash falls through the strategically angled diffuser fins to the ash drawer below.
- Large Ash Drawer**  
For added convenience, the NPS45 features the largest ash drawer in the industry.
- Cast Iron Burn Pot**  
The pellets drop into the solid cast iron burn pot which ensures complete combustion, minimal clinker formation and reliable, efficient heat.
- Convection Air**  
Room air is drawn in by a blower and flows through the seamless heat exchange tubes.
- Exhaust**  
Residual combustion air is vented outside through a vent pipe – no need for a conventional chimney which makes installation more versatile and economical. The exhaust blower speed automatically adjusts to selected feed rate ensuring maximum fuel efficiency.
- Automation**  
Simply fill with fuel and choose your desired heat and fan adjustments.
- Quiet Mode - NPS45 Only**  
The Quiet Mode feature is designed to eliminate unnecessary noise and reduce energy consumption. The Quiet Mode feature is built into the control board and enables the blower to shut down completely when the stove is in pilot/standby mode.
- Cleaning Mode**  
This exclusive feature initiates the combustion blower to turn on, controlling the fly ash from entering the room when the door is open for cleaning.
- Pellet Auger**  
The auger delivers pellets from the hopper to the burn pot at various speeds. The rate and amount of pellets dropped into the burn pot, controls the amount of heat generated.
- Hopper**  
The hopper is capable of handling a full bag of pellets, eliminating partial bags left open.
- Heat Exchange Tubes**  
Eight seamless heat exchange tubes, heated from the burning pellets, transfer heat to the cool air and efficiently provide plenty of comfortable heat into the room.
- Four Stage FAILSAFE System**  
This system features an automatic blower over ride switch, a high temperature limit switch, a low air pressure switch and a power failure safety shut down for your peace of mind.

## NPS45 - Pellet Stove

Shown on pages 2 & 3



Model	BTU's (Heat Input)	Hopper Capacity	Area Heated (sq. ft.)**	Burn Rate (lbs/hr)*	Burn Time (Low Burn)	Flue Diameter	Electrical Rating			Heat Circulating 120 CFM Blower	Outside Air Kit	Mobile Home Certified
							Volts	Amps	Hz			
NPS45	8,500 - 42,500	55 lbs	Up to 2,000	1-5	Up to 55 hours	3"	115	3.6	60	Included	Optional	Yes

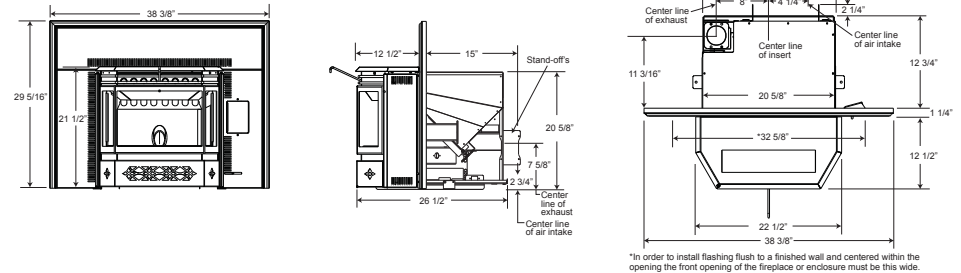
Minimum Clearances to Combustibles		
Corner	Rear	Sides
2"	3"	6"

This appliance has been tested to ASTM E 1509, UL 1482, ULC S627 AND ULC S628.

## NPI45 - Pellet Insert

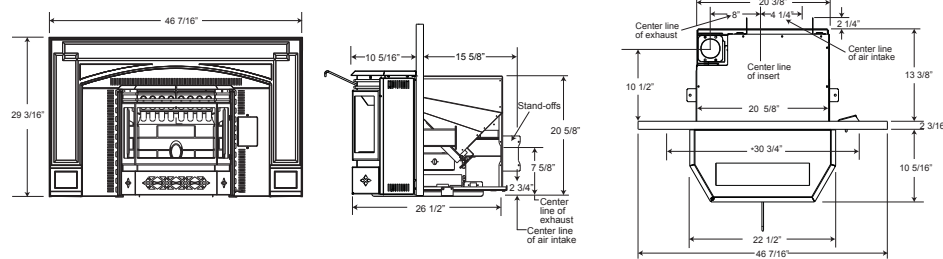
Shown on pages 4 & 5

NPI45 with flashing



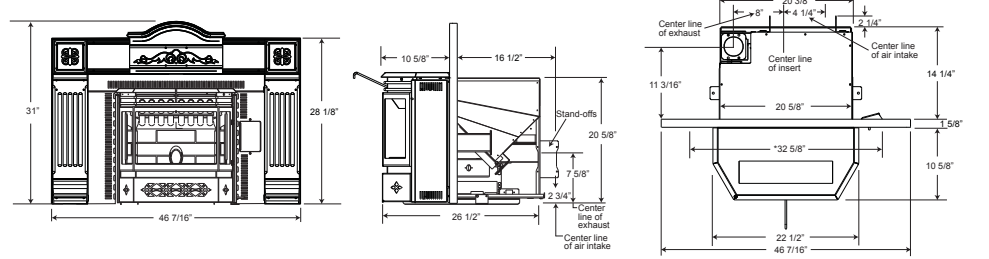
\*In order to install flashing flush to a finished wall and centered within the opening the front opening of the fireplace or enclosure must be this wide.

NPI45 with arched cast iron surround



\*In order to install flashing flush to a finished wall and centered within the opening the front opening of the fireplace or enclosure must be this wide.

NPI45 with cast iron surround



\*In order to install flashing flush to a finished wall and centered within the opening the front opening of the fireplace or enclosure must be this wide.

Model	BTU's (Heat Input)	Hopper Capacity	Area Heated (sq. ft.)**	Burn Rate (lbs/hr)*	Burn Time (Low Burn)	Flue Diameter	Electrical Rating			Heat Circulating 120 CFM Blower	Outside Air Kit	Mobile Home Certified
							Volts	Amps	Hz			
NPI45	8,500 - 42,500	45 lbs	Up to 2,000	1-5	Up to 45 hours	3"	115	3.6	60	Included	Optional	Yes

Minimum Fireplace Opening		
Width	Depth	Height
32 5/8"	14 1/4"	20 5/8"

This appliance has been tested to ASTM E 1509, UL 1482, ULC S627 AND ULC S628.

\*Small pellets will increase or decrease the stated burn rates and burn times. Differences of +/- 20% may occur depending on fuel quality.

\*\*Figures may vary with individual conditions such as floor plan layout, insulation value/heat loss of the house and geographical location.

Measurements to be used as a guide only. Consult your owner's manual for complete and up-to-date installation instructions and proper clearances to combustible materials. For zero clearance installations consult your owner's manual.



Other Napoleon® Products



Fireplace Inserts • Charcoal Grills • Gas Fireplaces • Waterfalls • Wood Stoves  
 Hybrid Furnaces • Electric Fireplaces • Heating & Cooling • Gourmet Grills



24 Napoleon Road, Barrie, Ontario, Canada L4M 0G8  
 103 Miller Drive, Crittenden, Kentucky, USA 41030  
 7200 Trans Canada Highway, Montreal, Quebec, Canada H4T 1A3

Tel: 705-721-1212 Fax: 705-722-6031  
[napoleonfireplaces.com](http://napoleonfireplaces.com)



Tested to ASTM E 1509, UL 1482, ULC S627 AND ULC S628. These heaters are EPA exempt from phase II requirements, but has been tested for emissions using EPA test methods by Warnock Hersey. Consult your owner's manual for complete installation instructions and check all local and national building codes. All specifications and designs are subject to change without notice to allow for on-going product improvement. Images may not be exactly as shown. © Wolf Steel Ltd. Napoleon® is a registered trademark of Wolf Steel Ltd.

Authorized Dealer